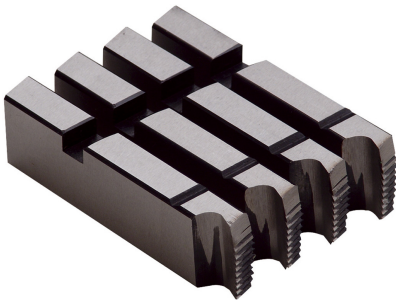


1622 : Dies for 2 " - 4 " Threading Machine Die Heads

Description



Standard: steel.
HSS: Zinc coated and stainless steel.

Machine producing "gas" threads with sealing as per NFE 03.004 compliant with ISO/7.
For tubes complying with the EN 10255 S and EN 10255 W standards (former NFA 49115 and NFA 49145 standard medium and heavy duty series); only light series tubes are not recommended.

References

Sku	Description	Ø ext. tube "	Pipe O.D. mm	For threader	kg
162201	Right hand BSPT	1/4 - 3/8	8/13 - 12/17	Steel - 1621	0,500
162202	Right hand BSPT	1/2 - 3/4	15/21 - 20/27	Steel - 1621	0,600
162203	Right hand BSPT	1 - 2	26/34 - 50/60	Steel - 1621	0,600
162204	Right hand BSPT	2.1/2 - 4	66/76 - 102/114	Steel - 1621	0,800
162205	Right hand NPT	1/4 - 3/8	8/13 - 12/17	Steel - 1621	0,500
162207	Right hand NPT	1/2 - 3/4	15/21 - 20/27	Steel - 1621	0,600
162208	Right hand NPT	1 - 2	26/34 - 50/60	Steel - 1621	0,600
162209	Right hand NPT	2.1/2 - 4	66/76 - 102/114	Steel - 1621	0,800
162301	HSS Right hand BSPT	1/4 - 3/8	8/13 - 12/17	Stainless steel - 1621	0,500
162302	HSS Right hand BSPT	1/2 - 3/4	15/21 - 20/27	Stainless steel - 1621	0,600
162303	HSS Right hand BSPT	1 - 2	26/34 - 50/60	Stainless steel - 1621	0,600
162304	HSS Right hand BSPT	2.1/2 - 4	66/76 - 102/114	Stainless steel - 1621	0,800

Sku	Description	Ø ext. tube "	Pipe O.D. mm	For threader	kg
162305	HSS Right hand NPT	1/4 - 3/8	8/13 - 12/17	Stainless steel - 1621	0,500
162307	HSS Right hand NPT	1/2 - 3/4	15/21 - 20/27	Stainless steel - 1621	0,600
162308	HSS Right hand NPT	1 - 2	26/34 - 50/60	Stainless steel - 1621	0,600
162309	HSS Right hand NPT	2.1/2 - 4	66/76 - 102/114	Stainless steel - 1621	0,800
162220	Right hand BSPP	1/2 - 3/4	15/21 - 20/27	Steel - 1621	0,600
162221	Right hand BSPP	1 - 2	26/34 - 50/60	Steel - 1621	0,600

