

2628 : Waterproof XXL spotlight

The + product :



Extremely powerful (4000 lumens) to light up your work sites thanks to its **COB LED technology**.

Waterproof for use in extreme conditions with **IP67 protection**.

Convenient dual power supply for use on **battery or mains**.

Description

Large-format, waterproof (IP67 protection) construction site floodlight for use in extreme indoor and outdoor working conditions.

4000 lumens of power to illuminate an entire room with a single spotlight, thanks to COB LED technology.

5-level dimming from 10% to 100%.

Dual-powered, offering battery operation for total freedom of movement, or mains operation for an infinite light source.

Long runtime of up to 14h thanks to its built-in Li-ion 11.1V / 4400 mAh battery.

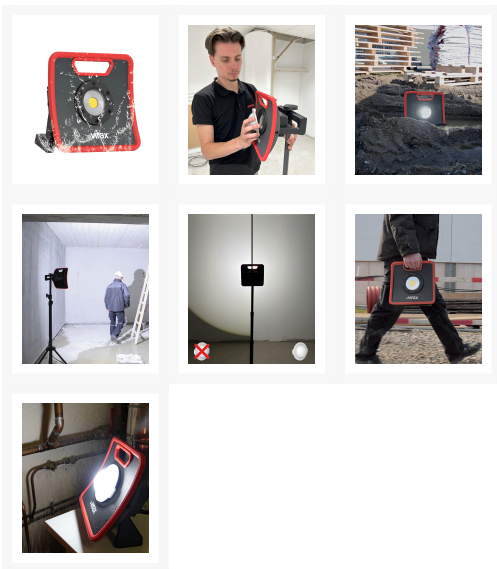
Simultaneous battery recharging and 100% light output when plugged in.

Impact-resistant for use in demanding working environments, thanks to its robust cast aluminum construction (IK07 protection rating).

Reduce glare and **adapt the lighting** to your work task with the **removable light diffuser** that spreads the light **180°**, creating **softer shadows**. Integrated magnets for easy installation.

5m cable and diffuser included.

Available with or without tripod.



References

SKU	Description	Size mm	kg
262823	XXL waterproof floodlight	235 x 233 x 88	2,300

Sku	Description	Size mm	kg
262824	XXL waterproof COB floodlight - 4000 lumens + 2m tripod	780 x 233 x 88	4,400

