



VIPER® M2X L2X - 20KN

LIGHTWEIGHT - COMPACT

MAKE THE MOST OF YOUR TALENT

01

CRIMPING UNDER CONTROL

The light LED ring indicates if your crimping is correct or not and lights up the work area at 360°.



02



ALWAYS HAVE THE RIGHT BATTERY

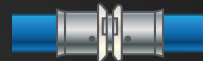
18V - 2,0Ah battery compatible with more than 400 tools from CAS partners (Cordless Alliance System). Issued from Metabo® technology, autonomy and lifetime are optimized.



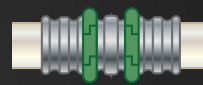
Ø12-28 mm



Ø12-28 mm



Ø12-32mm



Ø12-32mm (inserts)
Ø40mm (mini-jaws)



M2X

L2X

03

STAY CONNECTED

With "VIR-APP":

- Read the number of crimpings already done or up to the next maintenance.
- Customize your machine (brightness, time before standby, ...).
- Send job report to your customer.

253550 M2X + 2 BATTERIES (WITHOUT MOTHER JAW)

253551 M2X + 2 BATTERIES + MOTHER JAW

253570 L2X + 2 BATTERIES (WITHOUT MOTHER JAW)

253571 L2X + 2 BATTERIES + MOTHER JAW

SETS WITH INSERTS ASK YOUR DEALER

THE VIRAX SOLUTION

INSERTS



OR

MINI-JAWS



Conception graphique : © CHRISTOPHE TOUSSAINT



#VIRAXFRENCHMANUFACTURER



YouTube

