



MAKE THE MOST OF YOUR TALENT



THERMAL CAMERA THERMO VISIOVAL®

Easily detect thermal anomalies invisible to the naked eye

01

INSTANT DIAGNOSTIC

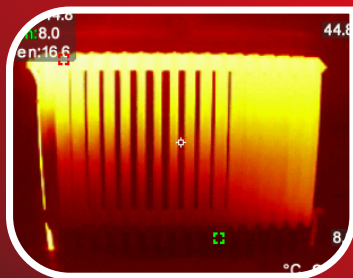
Analyse circulation in heating systems at a glance.



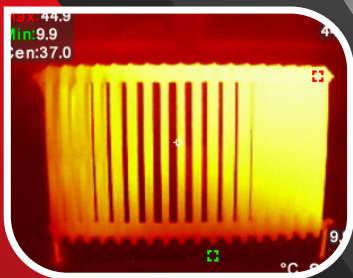
03

OPERATE WITH PRECISION

Check and demonstrate the efficiency of your before-and-after work using thermal imaging.



Before



After

MULTIPLE APPLICATIONS :

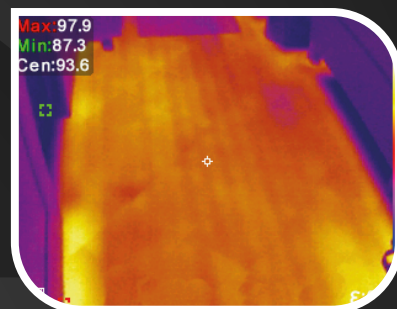
- Plumbing / heating
- Air conditioning
- Industrial installations
- Insulation
- Electrical installations...



02

VISUALISE THE INVISIBLE

Check in real time that an underfloor heating system is working properly thanks to the differences in emissivity of the materials.



294205 THERMAL CAMERA THERMO VISIOVAL®



IR RESOLUTION
256 x 192 pixels



3,5" DISPLAY
320 x 240 pixels RESOLUTION



3.7V LI-ION BATTERY
4H AUTONOMY

