

User guide

Virafal 24 app

Find the Virafal 24 application on:



Google Play



App Store

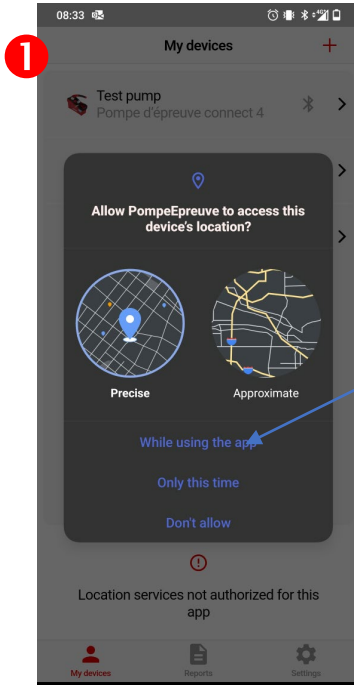


Virafal 24

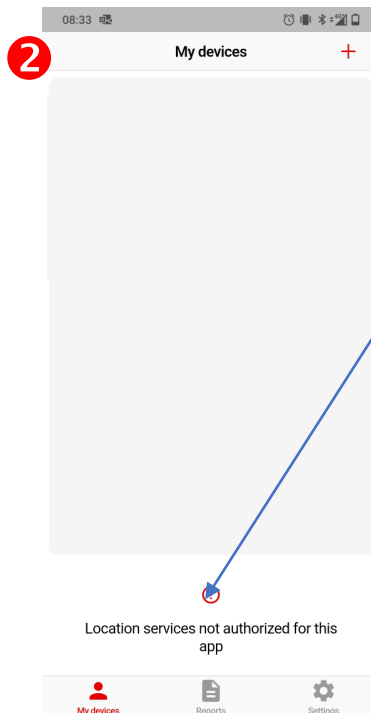
- A – 1st launch of the application**
- B – Add a Virafal Connect to the application**
- C – Delete a Virafal Connect to the application**
- D – Connection of the application to a Virafal Connect**
- E – Show cleaning information**
- F – Recover cleaning data**
- G – Pre-fill a report**
- H – Create a report**
- I – View the reports created**

User guide Virafal 24 app

A – 1st launch of the application



The app requires your GPS location when writing the report.
For this reason, you must authorize the use of location

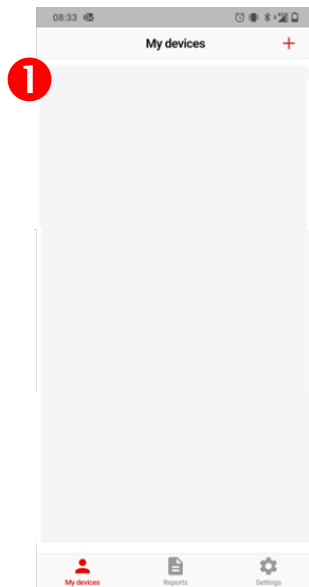


The app communicates with Virafal Connect via a Bluetooth connection.
This is why, in addition to Bluetooth being enabled, you need to allow the app to use Bluetooth in your phone settings.

Settings → *Applications* → *app management* → *Virafal 24*
→ *Permissions* → *Bluetooth LE* → *Allow*

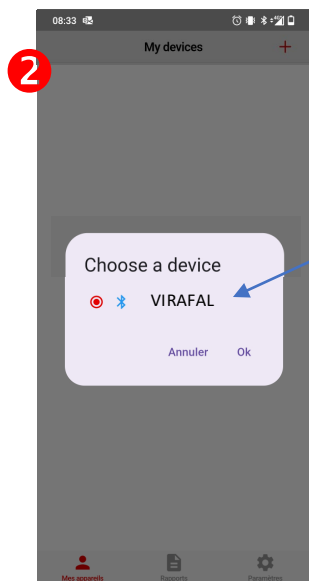
User guide Virafal 24 app

B – Add a Virafal Connect to the application



Find a device

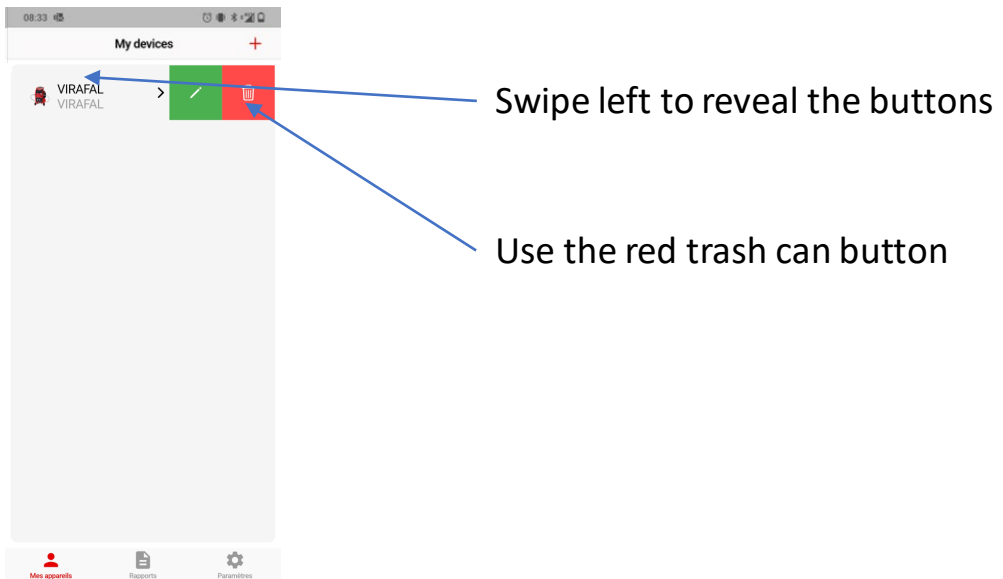
You must be near the device to add



Select a device from the results list

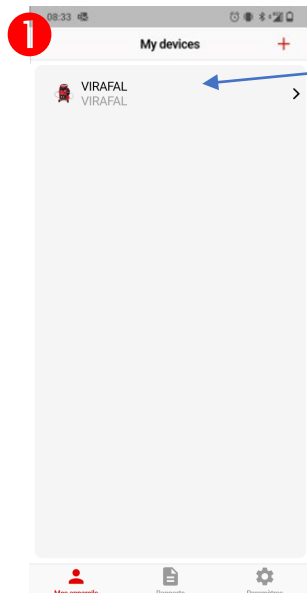
User guide Virafal 24 app

C – Delete a Virafal Connect from the application

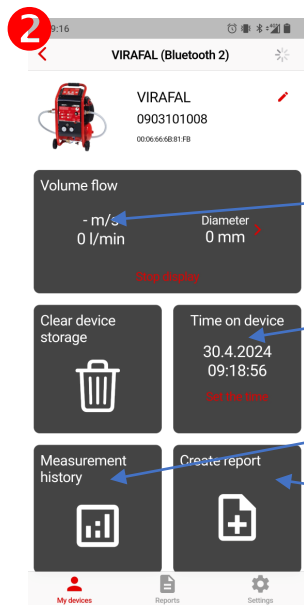


User guide Virafal 24 app

D – Connection of the application to a Virafal Connect



Select a Virafal Connect from the list of already added devices



Viewing device information

Flow information

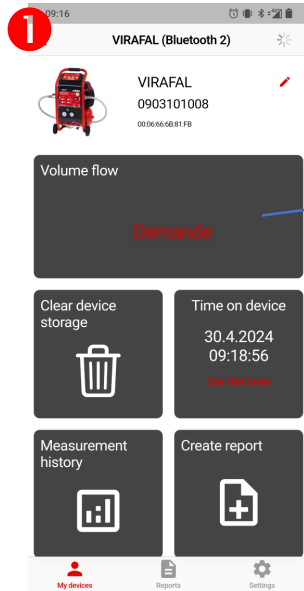
Device time

Measurement history

Editing a report

User guide Virafal 24 app

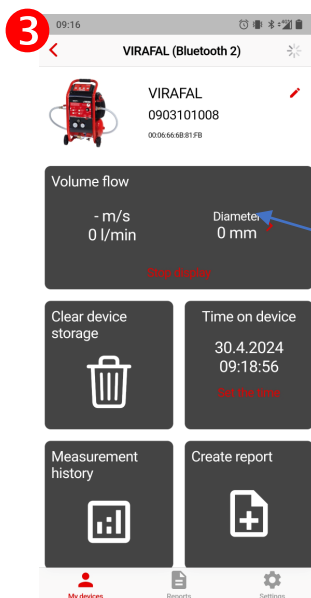
E – Show cleaning information



Click to start displaying information



Do the cleaning



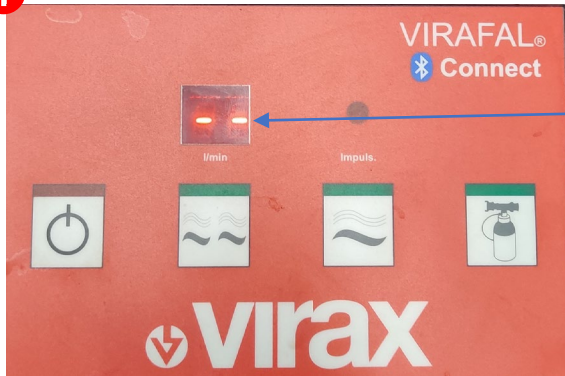
Flow information appears and evolves live

Cleaning cycle recordings are made automatically after cycle changes via the Virafal Connect control panel

User guide Virafal 24 app

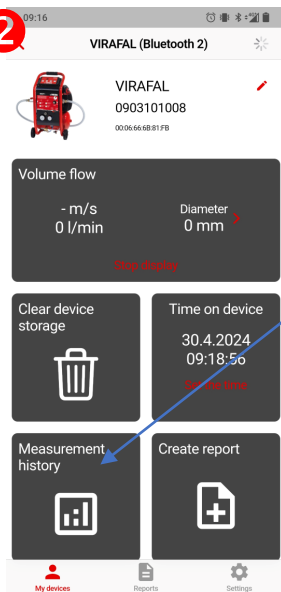
F – Recover cleaning data

1



Put the Virafal Connect on stand-by

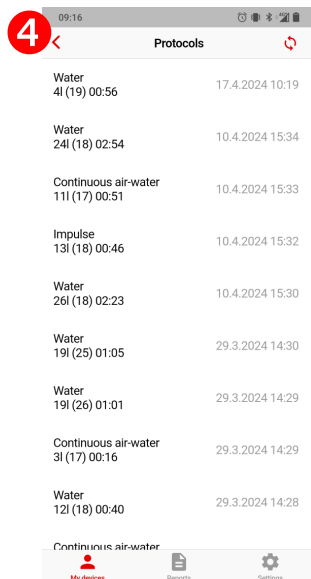
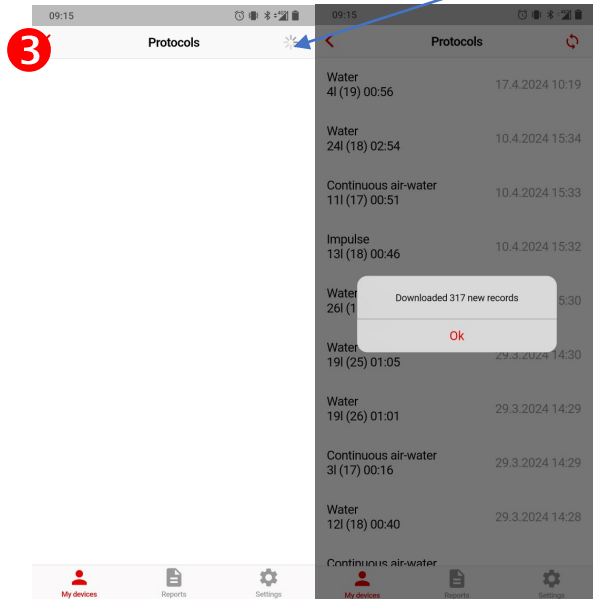
2



Click on Measurements history

User guide Virafal 24 app

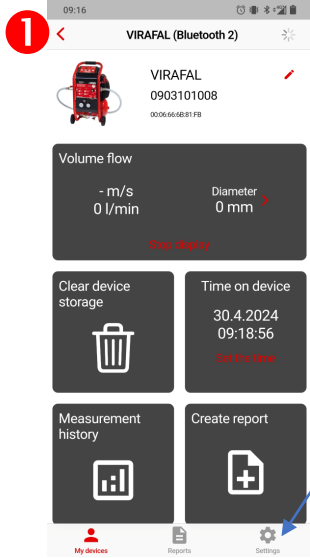
Click to download all
measurements



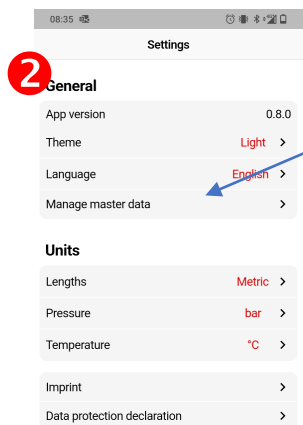
All measurements are now available to
make reports

User guide Virafal 24 app

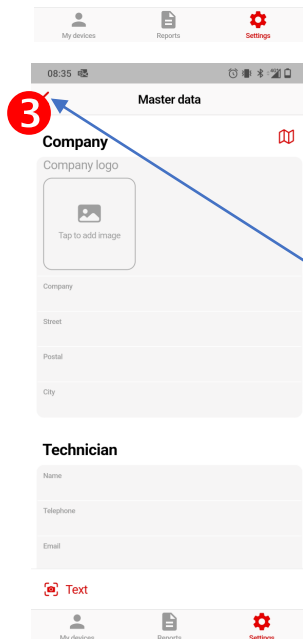
G – Pre-fill a report



The application allows you to pre-populate your reports with your company's data to save time. To do this, click on “Settings”



Click on “Manage master data”

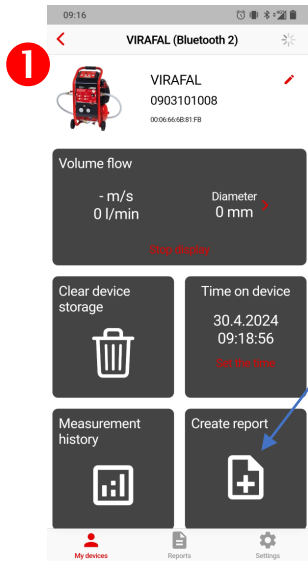


Fill in all the information necessary for the report

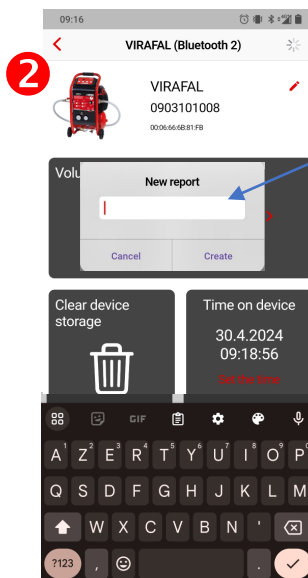
Return to the home screen once finished to validate. Your data is saved

User guide Virafal 24 app

H – Create a report

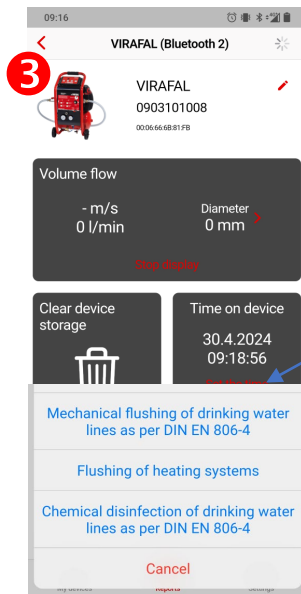


Click “Create Report”



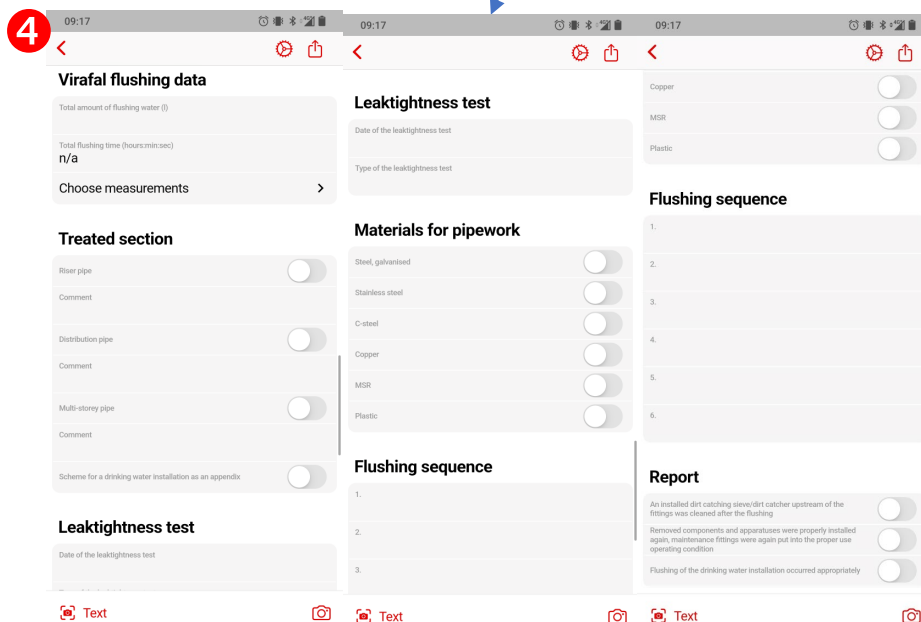
Give your report a name

User guide Virafal 24 app

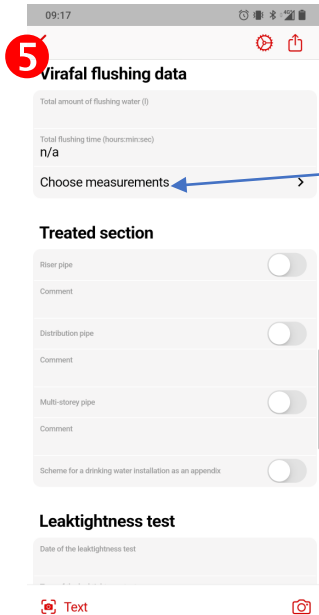


Select the type of network tested

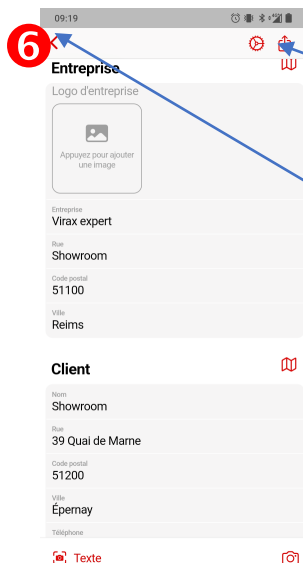
Fill in all the information necessary for the report which has not yet been completed



User guide Virafal 24 app



Select one or some measurements

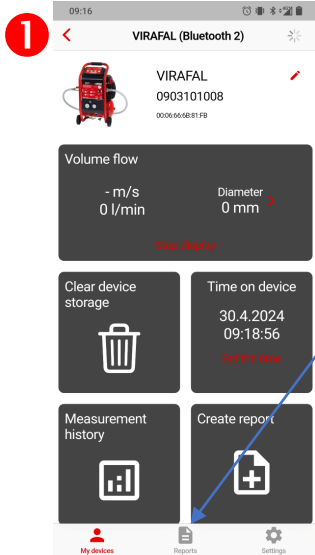


Create the report in PDF format.
You can then print it or share it.

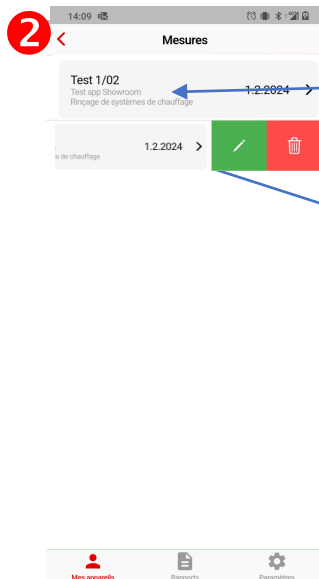
The report is automatically saved by
pressing the back button.

User guide Virafal 24 app

I – View the reports created



Click “Report”



Select the report to view

Swipe left to reveal the buttons