

Prerequisites

- P30+ Press Fitting Machine

WARNING! The serial number of the P30+ must always start at least by P30+_13 ... or P30+_14 ... etc

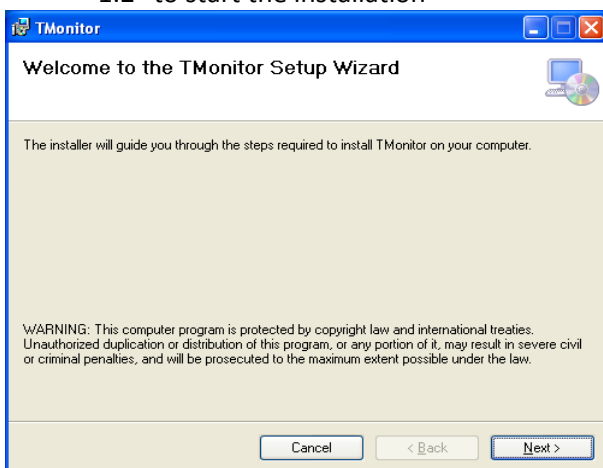
- USB type A 2 cable male / mini B male
- Computer in Windows XP Professional SP3 or later

Installation

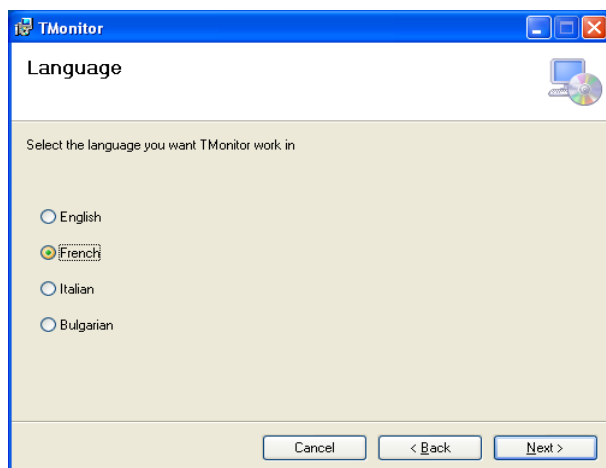
1. Open an administrator session
2. Copy "Virax P30 + 1.2 TMonitor Setup Wizard" to a temporary directory



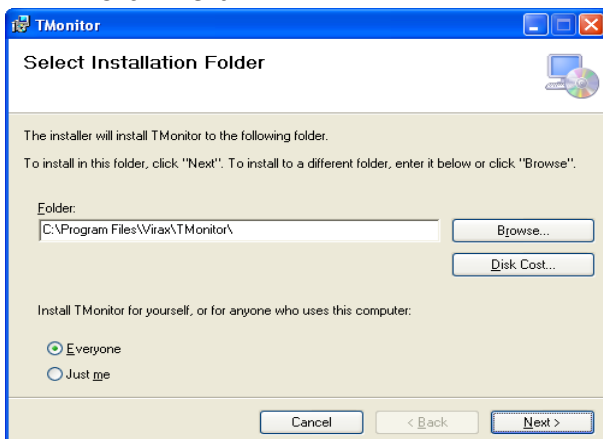
3. Click "Virax P30 + Monitor Setup Wizard 1.2" to start the installation



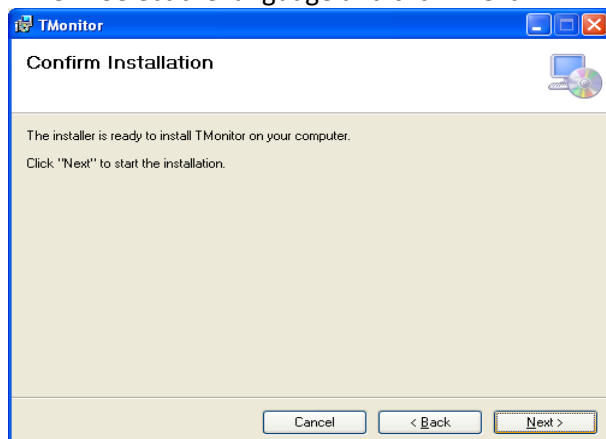
4. Click "Next"



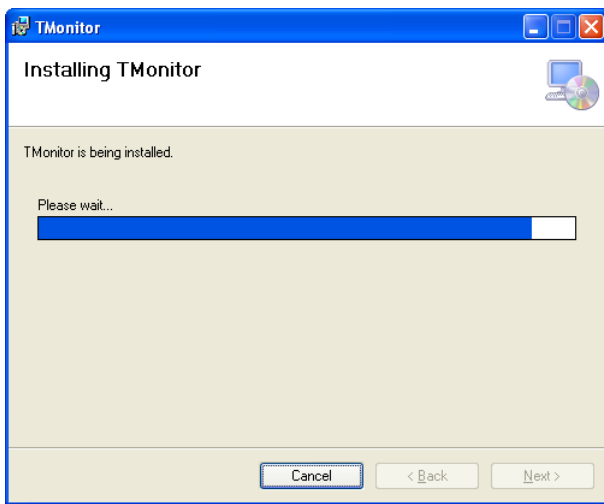
5. Select the language and click "Next"



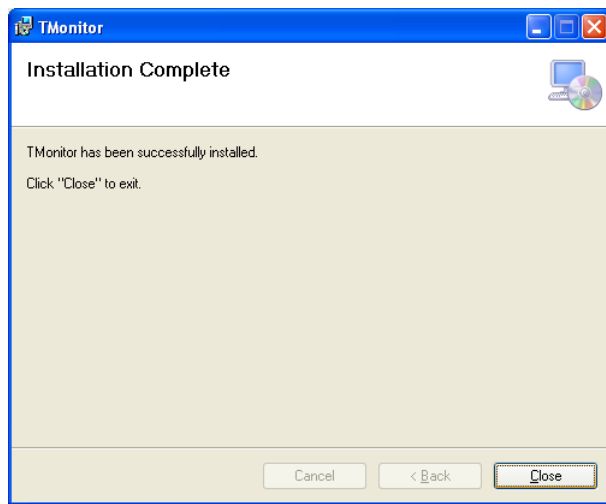
6. Select the installation folder (the default is generally appropriate), ensure that "Everyone" is selected and click "Next"



7. Click "Next"



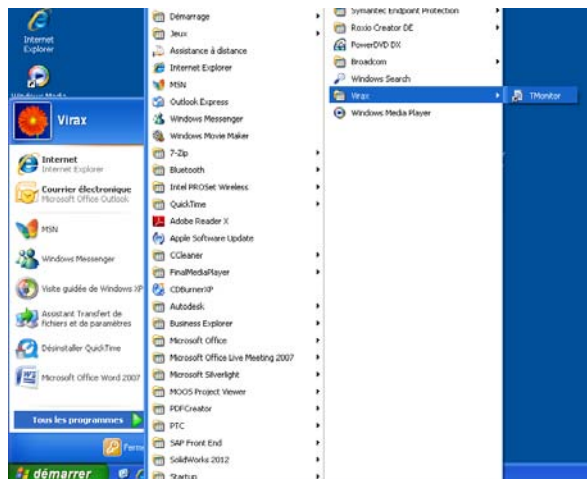
8. Please wait



9. Click "Close"

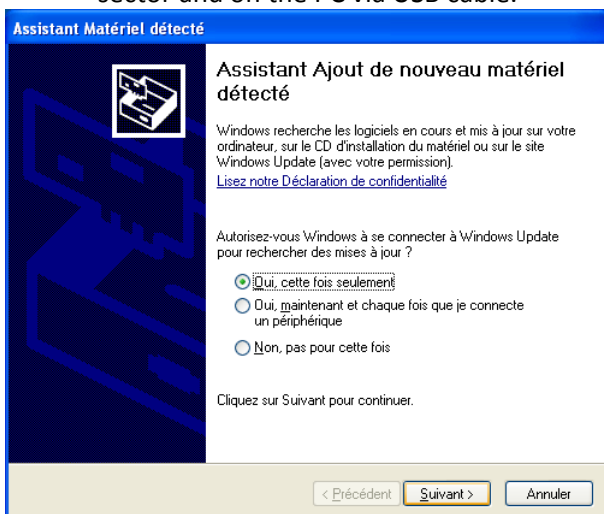


10. The installation program has created a desktop icon and a link in the start menu > All Programs

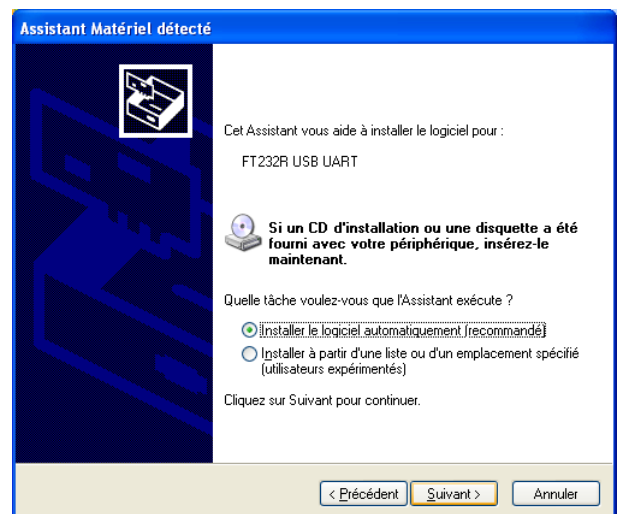


Installation (optional) additional drivers

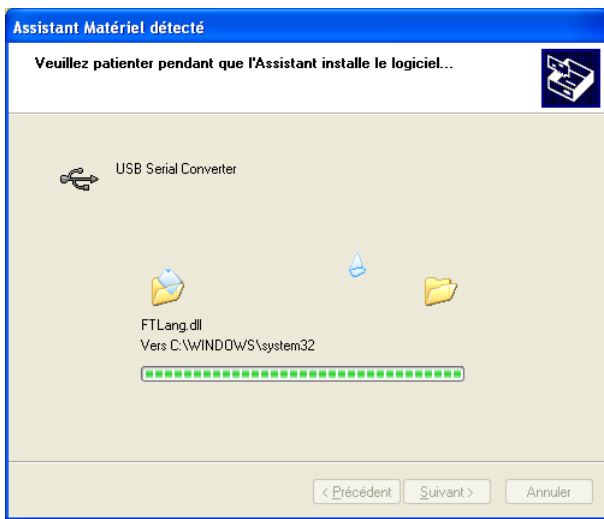
11. Depending on the version of Windows used, additional drivers will be required. In this case, make sure the PC is connected to the Internet for Windows to install. Connect the P30+ Press Fitting Machine on the sector and on the PC via USB cable.



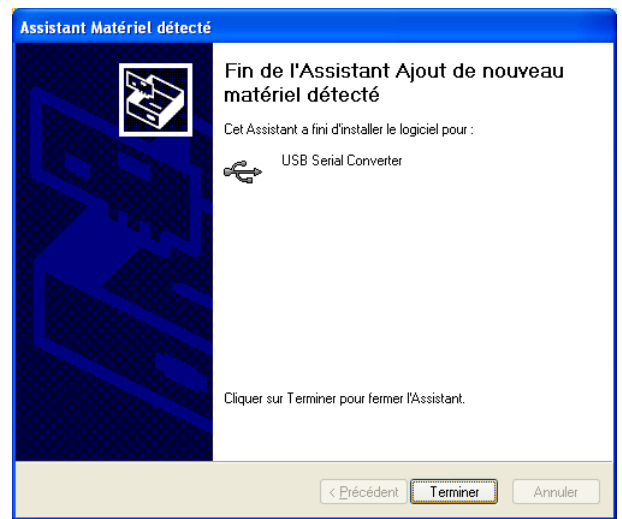
12. Select "Yes" and click "Next"



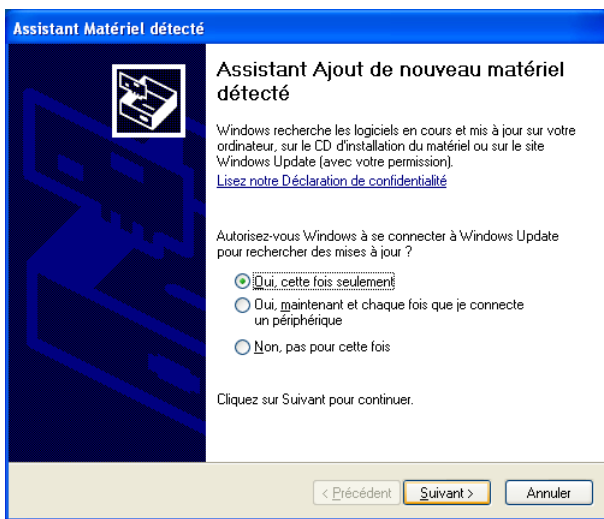
13. Select "Install the software automatically" and click "Next"



14. Please wait



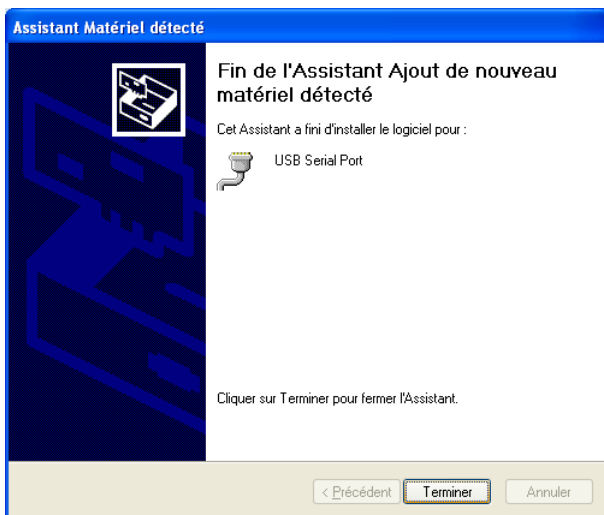
15. Click "Close"



16. In the event that another driver would be necessary, select "Yes" and click "Next"



17. Please wait



18. Click "Close"

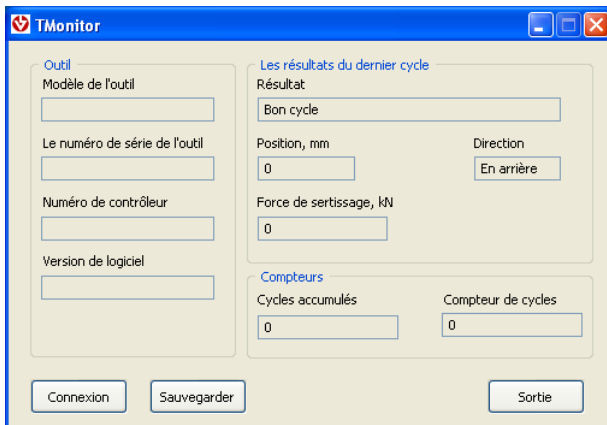
Using the software TMonitor



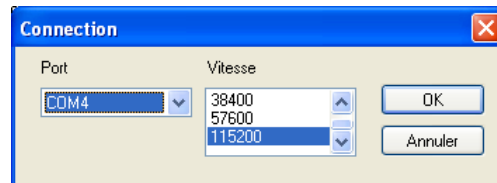
1. Connect the P30+ Press Fitting Machine on the sector and to the PC via USB cable



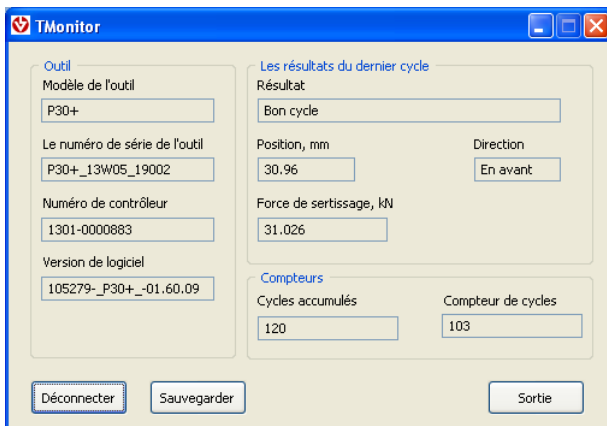
2. Run "TMonitor"



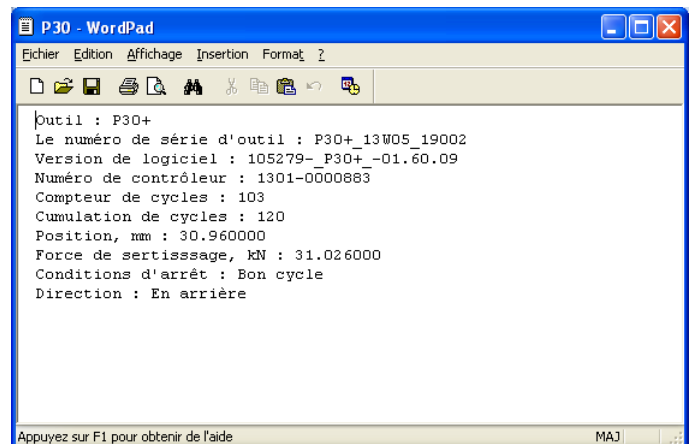
3. Click "Connexion"



4. Select the communication port to which the machine is connected, check that "115200" is selected and click "OK". If the error message "The connection with the tool has not been established" appears, select another port



5. The software reads the information of the P30+ Machine and displays. The number of cycles performed by the user is indicated in "Cycle counter". The gap between the information "Accumulated cycles" and "Cycle counter" represents quality checks during manufacture by Virax



6. Example of saving information obtained by clicking on "Save".