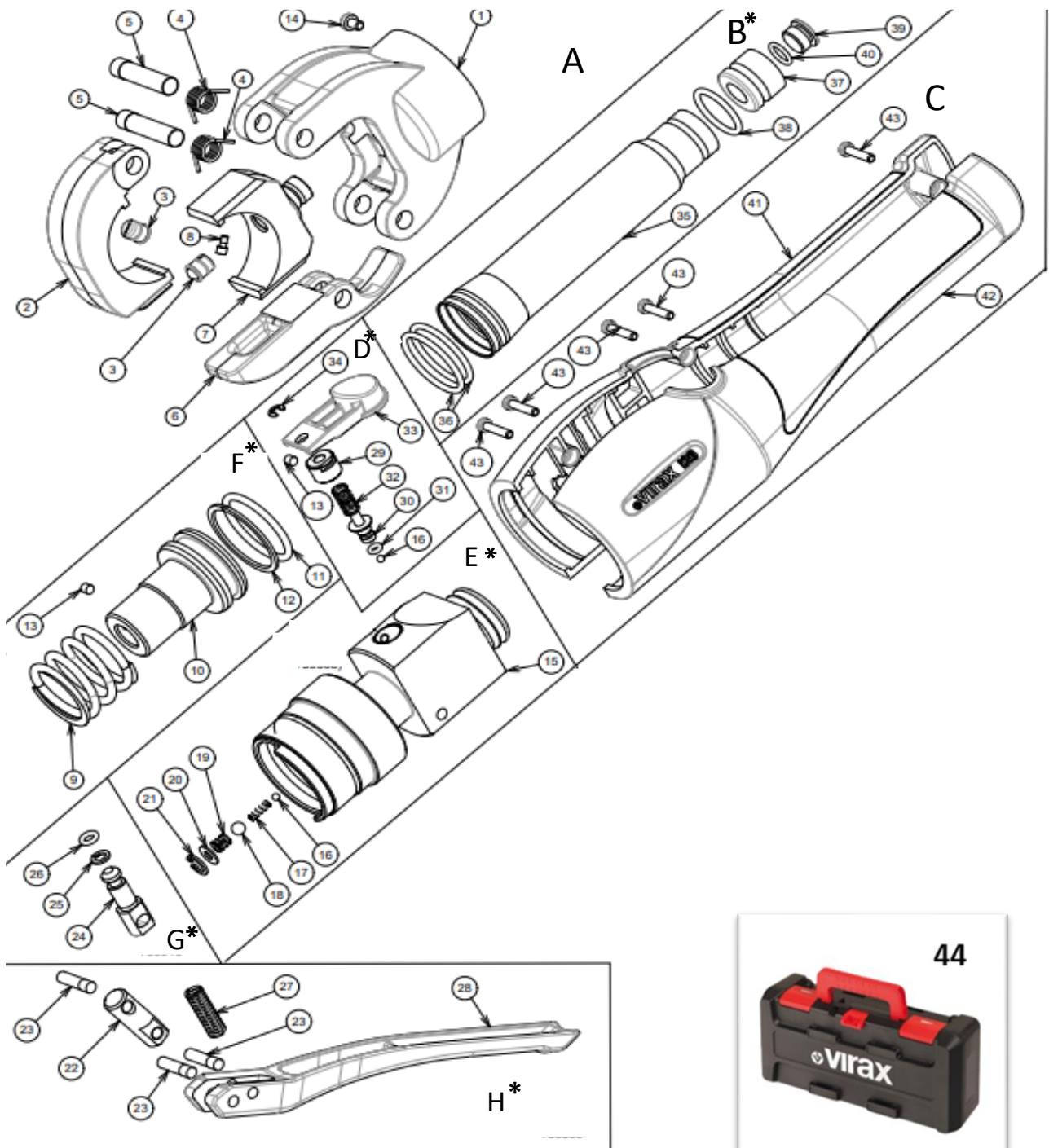




Sertisseuse manuelle I26
Manuel hydraulic press fitting I26

252910

252912-252913-252921-252922



* Non disponible à la vente : le remplacement de ce produit nécessite un retour dans notre SAV.
*Not available for sale: the replacement of this product requires a return to our After Sales Service

Pour nous contacter / To contact us : www.virax.com / contact



| Rep Rep | Quantité Quantity | Désignation / designation | Référence (x1) Reference (x1) | Kit Kit |
|------------|----------------------|---|----------------------------------|------------|
| 1 | 1 | Embase pince usine / Factory clamp base | 891387 | A |
| 2 | 1 | Support mobile usiné / Machined mobil support | 891385 | A |
| 3 | 2 | Poussoir Ø8 / Pusher Ø8 | 890148 | A |
| 4 | 2 | Ressort torsion pince / Spring torsion clamp | 891400 | A |
| 5 | 2 | Axe verrou / Lock pin | 891397 | A |
| 6 | 1 | Verrou usiné /Machined lock | 891388 | A |
| 7 | 1 | Coulisseau usiné / Factory slide | 891386 | A |
| 8 | 1 | Détrompeur / Mechanical coding | 891390 | A |
| 9* | 1 | Ressort* / spring T3 25x36x40* | 891403* | F |
| 10* | 1 | Piston pince* / Piston pliers v2* | 891398* | F |
| 11* | 1 | Joint torique* / O ring* | 891402* | F |
| 12* | 1 | Bague anti-extrusion* / Back up ring* | 891401* | F |
| 13* | 2 | Vis pointeau* / pointed screw M4x6* | 891404* | D/F |
| 14 | 1 | Vis tête basse / Low head screw M4x6 | 890555 | A |
| 15* | 1 | Distributeur* / Distributor* | 891399* | E |
| 16* | 2 | Bille* / ball Ø3* | 877566* | D/E |
| 17* | 1 | Ressort* / spring T4 2.5x3.3x10* | 891430* | E |
| 18* | 1 | Bille* / Ball Ø5* | 879404* | E |
| 19* | 1 | Ressort* / spring T4 4.5x5.9x6.3* | 891431* | E |
| 20* | 1 | Rondelle* / Washer M4N* | 891425 | E |
| 21* | 1 | Circlips* / Circlips Ø 10* | 891424* | E |
| 22 | 1 | Bielle levier / lever rod | 891391 | H |
| 23 | 3 | Axe levier / lever shaft | 887071 | H |
| 24* | 1 | Piston pompe* / Pump piston* | 891625* | G |
| 25* | 1 | Bague anti-extrusion* / Anti-extrusion ring Ø 8 * | 891627* | G |
| 26* | 1 | Joint torique* / O-ring Ø 4.5* | 891626* | G |
| 27 | 1 | Ressort / Spring T2 5x8x40 | 889465 | H |
| 28 | 1 | Levier usiné / Machined lever | 891389 | H |
| 29* | 1 | Vis de réglage* / Adjustment screw* | 891428* | D |

* Non disponible à la vente : le remplacement de ce produit nécessite un retour dans notre SAV.

*Not available for sale: the replacement of this product requires a return to our After Sales Service



| Rep Rep | Quantité Quantity | Désignation / designation | Référence (x1) Reference (x1) | Kit Kit |
|------------|----------------------|--|----------------------------------|------------|
| 30* | 1 | Clapet de sécurité* / Safty valve* | 891426* | D |
| 31* | 1 | Joint torique* / O ring* | 891429* | D |
| 32* | 1 | Ressort clapet* / Valve spring* | 891427* | D |
| 33* | 1 | Poussoir* / Pusher* | 891423* | D |
| 34* | 1 | Anneau* / ring E type 864 Ø4* | 883719* | D |
| 35* | 1 | Réservoir* / Tank* | 887007* | B |
| 36* | 2 | Joint torique* / O-ring Ø22.2* | 879401* | B |
| 37* | 1 | Raccord de remplissage* / Filling connection* | 887080* | B |
| 38* | 1 | Joint torique* / O ring Ø14* | 887094* | B |
| 39* | 1 | Bouchon épaulé* / Shouldered plug* | 887078* | B |
| 40* | 1 | Joint torique* / O-ring Ø8.73* | 887093* | B |
| 41 | 1 | Demi-enveloppe arrière / Rear half housing | 891392 | C |
| 42 | 1 | Demi-enveloppe avant / Front half housing | 891393 | C |
| 43 | 5 | Vis auto taraudeuse /self tapping screw 3.5x16 | 890673 | C |
| 44 | 1 | Virabox I26 | 753538 | / |
| Kit A | 1 | Rep 1, 2, 3, 4, 5, 6, 7, 8, 14 | 753511 | / |
| Kit B* | 1 | Rep 35, 36, 37, 38, 39, 40 | 753507* | / |
| Kit C | 1 | Rep 41, 42, 43 (x5) | 753506 | / |
| Kit D* | 1 | Rep 13, 16, 29, 30, 31, 32, 33, 34 | 753508* | / |
| Kit E* | 1 | Rep 17, 18, 19, 20, 21 | 753512* | / |
| Kit F* | 1 | Rep 9, 10, 11, 12, 13 | 753513* | / |
| Kit G* | 1 | Rep 24, 25, 26 | 753510* | / |
| Kit H | 1 | Rep 22, 23, 27, 28 | 753509 | / |
| Kit I | 1 | Rep 1, 2, 3, 4, 5, 6, 7, 8, 9, 10, 11, 12, 13, 14, 15, 16, 17, 18, 19, 20, 21, 22, 23, 24, 25, 26, 27, 28, 29, 30, 31, 32, 33, 34, 35, 36, 37, 38, 39, 40. | 891410 | / |

* Non disponible à la vente : le remplacement de ce produit nécessite un retour dans notre SAV.

*Not available for sale: the replacement of this product requires a return to our After Sales Service