



VIRAX THREADING MACHINES

*Performance
in action*



 **virax**

2"

THREADING MACHINE

Quick-clamping
hammer chuck.



For easy precision threading

With the Virax threading machine, threading becomes a simple, efficient operation. Set up, adjustment and operation are designed to ensure ideal conditions for quick, safe, comfortable and easy pipe threading.

Automatic opening
or manually operated
threading head.



Quick, simple thread
size adjustment.



Self-priming gear-style
oil pump. Raised strainer
avoids oil contamination by
iron filings. Variable oil flow
control.



**Hammer-type
chuck and long
jaws** to rapidly, firmly
and safely secure
the pipe.

Body 330 mm long
for threading short lengths
of pipe. The body is angled
at 2.2° to drain the oil
from the pipe.

Safety switch avoids
accidental operation.

Universal motor designed
for harsh condition.
Can withstand voltage
drops of up to 80 V.

**Lightweight,
manoeuvrable carts**
are the ideal choice to easily
and efficiently transport your
equipment on site.
The machine can be loaded
and unloaded from a utility
vehicle by one person.

Safety pedal for starting
and stopping the machine.



Long jaws for securely clamping the pipe.



Quick jaw replacement.



Self-centring pipe cutter with heavy-duty cutting wheel.



Pipe cutter with an ergonomic handle for improved grip.

Five-blade reamer for a clean, accurate result.



High strength dies available in HSS and standard grade steel.

Heavy-duty dies of HSS or standard grade steel.



Slotted dies for quick and easy replacement without removing the head.



Ergonomic, 4-arm handle for improved grip and maximum safety.

Index ball for **fast, simple die changing.**



Specification

Ref.: 162120
Rated power: 1100 W
Speed: 38 rpm
Weight: 57,70 kg
Dimensions: 1160 x 650 x 1100 mm

The 1/2" to 2" threading machine is supplied with:

- 1 automatic 1/2" to 2" BSPT and NPT threading head
- 1 set of right-hand BSPT dies 1/2" - 3/4"
- 1 set of right-hand BSPT dies 1" - 2"
- 1 set of carbon brushes
- 1 steel pipe cutting wheel
- 5 L container of oil (Ref. 110105)
- 4 support legs

 **virax**

4" THREADING MACHINE

Quick-clamping
hammer chuck.



Automatic opening
threading head.



Quick, simple thread
size adjustment.



Precise thread depth
adjustment.



Self-priming gear-style
oil pump. Raised strainer
avoids oil contamination
by iron filings. **Variable
oil flow control.**



Extra power...

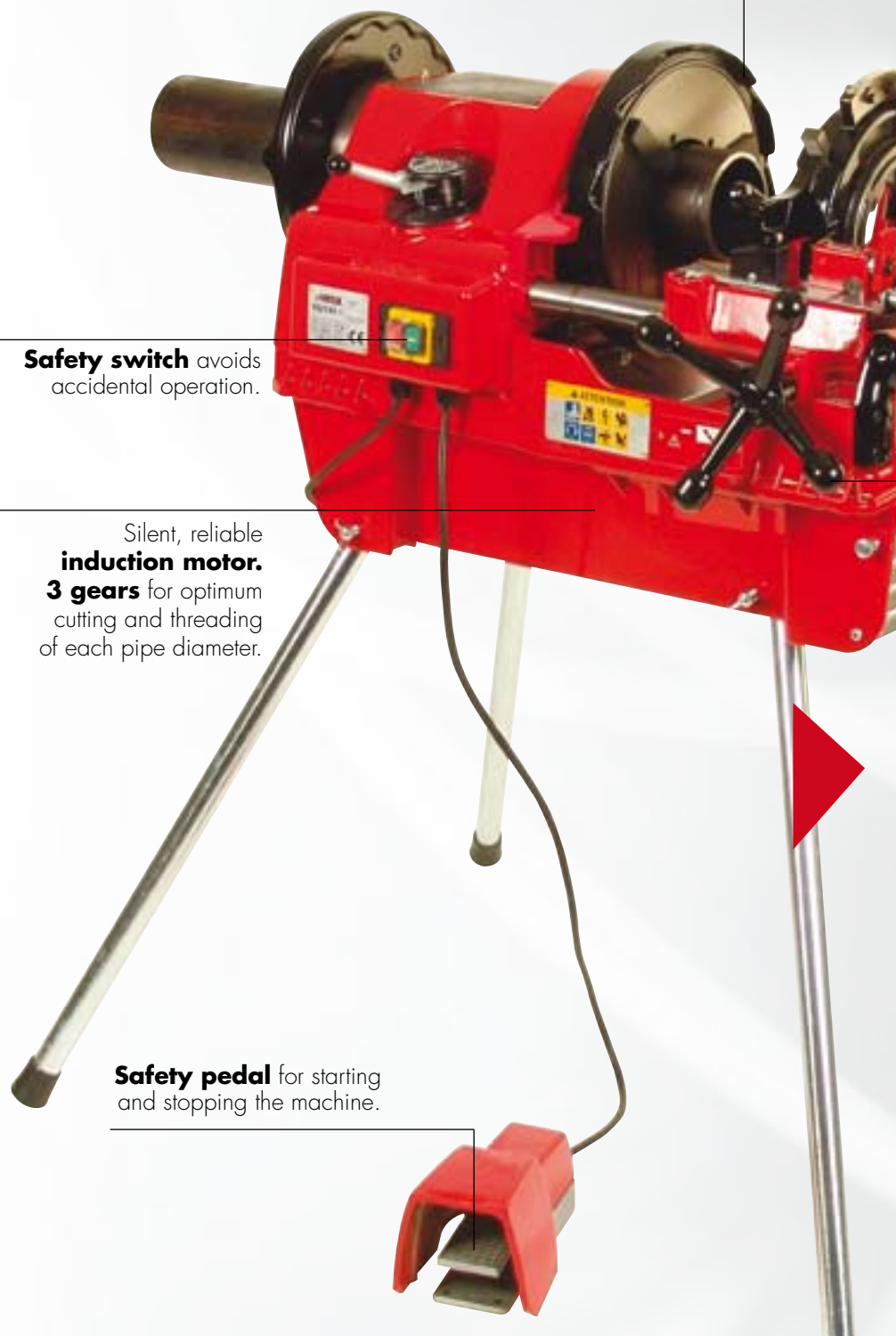
A machine of proven endurance, designed for high-volume applications, the 4" threading machine is the ideal solution for all your grooving and threading needs. Unbeatable reliability on site or in the workshop.

Hammer-type chuck and long jaws to rapidly, firmly and safely secure the pipe.

Safety switch avoids accidental operation.

Silent, reliable
induction motor.
3 gears for optimum cutting and threading of each pipe diameter.

Safety pedal for starting and stopping the machine.



Long jaws for securely clamping the pipe.



Quick jaw replacement.

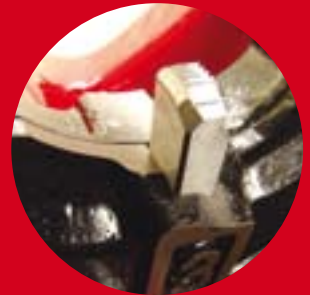


Self-centring pipe cutter with heavy-duty cutting wheel.



Pipe cutter with an ergonomic handle for improved grip.

Heavy-duty dies available in HSS and standard grade steel.



Heavy-duty dies available in HSS and standard grade steel.

Slotted dies for quick and easy replacement without removing the head.



Three-blade reamer for precision result.

Ergonomic, 4-arm handle for improved grip and maximum safety.

Specification

Ref.: 162140
Rated power: 1600 W
Speed: 36/20/11 rpm
Weight: 142,20 kg
Dimensions: 1200 x 870 x 1200 mm

4" threading machine is supplied with:

- 1 automatic 1/2" to 2" BSPT threading head
- 1 automatic 2.1/2" to 4" BSPT threading head
- 1 set of right-hand BSPT dies 1/2" - 3/4"
- 1 set of right-hand BSPT dies 1" - 2"
- 1 set of right-hand BSPT dies 2.1/2" - 4"
- 1 steel pipe cutting wheel
- 2 x 5 L containers of oil (Ref. 110105)
- 4 support legs

Index ball for fast, simple die changing.



Special **storage compartment.**

 **virax**

GROOVER

Fast, uniform grooves...

Designed for on site applications, the Virax groover is quick and simple to use. It also fits most machines currently on the market. Fitted standard with a 2 - 6" drive wheel for steel. Easy to carry, weighs only 11 kg.

Pipe for grooving

Steel pipes: NF EN 10208.2/10255W/10217.1/
10255S/10216.1

Max thickness 5,5 mm

The machine is supplied with:

- 1 connecting shaft
- 1 set of cutting wheels 2 to 6"
- 1 adjustment tool
- Adaptor optional



DESCRIPTION	REF
Portable 2"- 6" grooving machine	162400
Set of 1" cutting wheels	162431
Set of cutting wheels 1.1/4" - 1.1/2"	162432
Set of cutting wheels 2" - 6"	162433



① Adaptor for the VIRAX grooving machine

These adaptors allow the Virax groover to be mounted on most threading machines currently available.

MACHINE	REF
Virax 162120	162420
Virax 162140	162430
Virax 1620	162424
Ridgid 300	162421
Ridgid 300C	162422
Ridgid 535	162423
Rems Tornado and Magnum	162425
Rothenberger Supertronic 2SE	162420

② Adaptor for grooving machine



These adaptors allow other groovers to be mounted on a Virax 2" threading machines.

GROOVER	REF
Ridgid 916, 918 and Rems 347000 for 162120	162426
Rothenberger 5.65XX	*

* The adaptor is not needed for Ref. 5.6505

ACCESSORIES

Quick, simple adjustment system ensuring a constant groove depth.



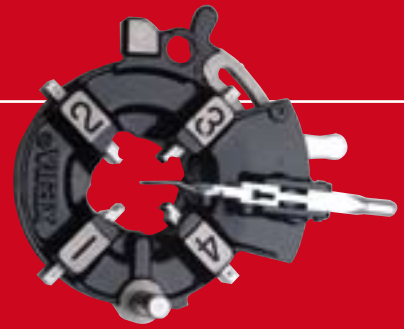
Turn with a **ratchet wrench or handle** for reduced effort.



1 This **adaptor** allows the Virax groover to be mounted on most **threading machines currently available.**



2 This **adaptor** allows other groovers to be mounted on **Virax threading machines.**

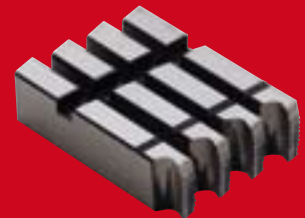


Threading machine heads

CAPACITY	MACHINE	STANDARD THREAD	THREAD WITH CHANGE OF GUIDE	OPENING	DIRECTION OF THREAD	REF
1/4 - 3/8"	162120 /40	1/4 - 3/8"	-	Manual	Right-hand	162150
1/2 - 2"	162120 /40	BSPT - NPT	BSPP - UNC NPSM - BSW	Auto	Right-hand	162151
2.1/2 - 4"	162140	BSPT	-	Auto	Right-hand	162152
2.1/2 - 4"	162140	NPT	-	Auto	Right-hand	162153

Dies

Standard: steel
HSS: Zinc coated and stainless steel.



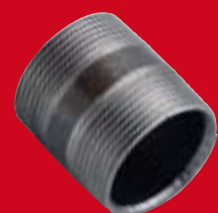
THREAD	RIGHT-HAND BSPT				RIGHT-HAND NPT			
	1/4-3/8"	1/2-3/4"	1 - 2"	2.1/2-4"	1/4-3/8"	1/2-3/4"	1 - 2"	2.1/2-4"
Standard	162201	162202	162203	162204	162205	162207	162208	162209
HSS	162301	162302	162303	162304	162305	162307	162308	162309

Nipples

Nipples form connectors.
Quick installation.
Quick attachment and removal with a wrench.

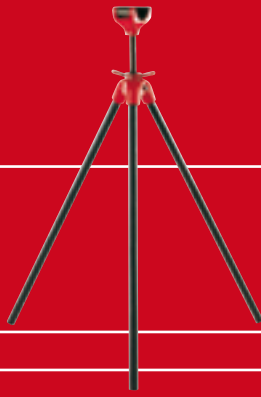


PIPE (INS.)	CONNECTOR LENGTH	REF
1/2"	46	162450
3/4"	53	162451
1"	56	162452
1.1/4"	66	162453
1.1/2"	66	162454
2"	73	162455
2.1/2"	77	162456
3"	82	162457
4"	82	162459



Connectors

Pipe stand



DESIGNATION	KG	REF
Without support legs*	4,100	161100
With support legs* Max. height 98 cm, Min. height 85.5 cm	8,000	161110

* the support legs can be formed from 3/4" tubes (20/27).

Steel and stainless steel threading oil



New, improved blend. Specially designed for manual and powered threading. With its very high lubricating ability, Virax cutting oil ensures better quality threads and lengthens the service life of both dies and machines. Water emulsifiable. Odourless.

Caution: Must be rinsed with detergent when used on potable water circuits.

STEEL CUTTING OIL

L	PACKAGING	REF
1	Container	110101
5	Container	110105
1	Box of 12 containers	110112
20	Container	110120
500 ml	Aerosol	110200
500 ml	Box of 12 spray cans	110202

HUILE DE COUPE INOX

L	PACKAGING	REF
5	Container	110505
5	Box of 4 containers	110506

Synthetic cutting oil



Specially designed for threading potable water pipes, it is odourless, completely biodegradable and leaves no taste and no residue in the system. This oil extends tool life, improves the state of machined surfaces, prevents shavings sticking to the surface and simplifies surfacing and cutting operations.

To be used undiluted.

Complies with DVGW hygiene standard (identification no. DW - 0201AT2541).

L	PACKAGING	REF
5	Container	110605

Spare parts

DESIGNATION	REF
Cutting wheel for steel pipe (2" and 4" threading machines)	162470
Cutting wheel for stainless steel pipe (2" and 4" threading machines)	162471
Carbon brushes (set of 2) for 2" threading machine	753066
Set of 3 jaws for 2" threading machine	753068
Set of 3 pawls for 2" threading machine	753069
Set of 3 jaws for 4" threading machine	753070
Set of 3 pawls for 4" threading machine	753071

CARTS FOR 2" AND 4" THREADING MACHINES

Folding cart for 2" threading machine

Folding cart for easily transporting the threading machine. The machine can be loaded and unloaded from a utility vehicle by **one person**. The cart includes pistons for raising and lowering the machine.

Ref.: 162460
For machine: 162120

Supplied with:
Oil emptying system
Fastening screws



Easy machine mobility.



Rest the top of the cart on the sill of the van.



Lift, push and roll forward... and its loaded!



Tool tray.

Cart for 4" threading machine

Fitted with four wheels and handles for easy transport.

Ref.: 162461
For machine: 162140

Supplied with:
Fastening screws



Easy machine mobility.



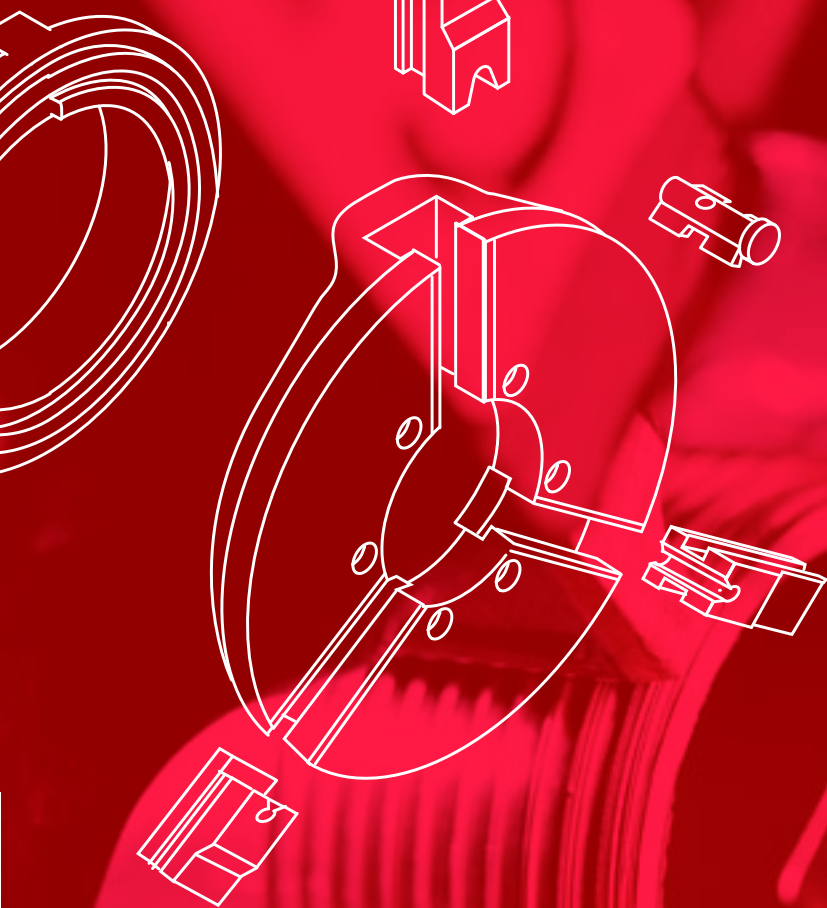
Loading into a utility vehicle.



Rides kerbs and other obstacles easily.



Tool tray.



 **virax**

Makes the most of your talent

39, quai de Marne - BP 197
F - 51206 Epernay Cedex

www.virax.com

Customer Services France - Tel.: +33 (0)3 26 59 56 78 - Fax: +33 (0)3 26 59 56 20 - client.fr@virax.com
International Customer Service - Tel.: +33 (0)3 26 59 56 97 - Fax: +33 (0)3 26 59 56 70 - export@virax.com