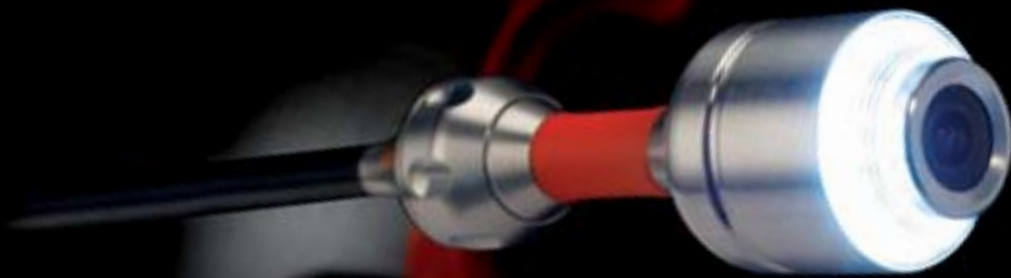


# VISIOVAL CAMERAS

INNOVATION  
virax



Inspect, record,  
*detect!*



2 models, including 1  
with built-in recorder

 **virax**

# Visioval cameras

2 models to inspect all types of network: pipes, chimneys, ventilation and many others

## > Visioval 294020



**26 mm waterproof head:**  
Inspection from interior Dia. 40 mm to 150 mm. Flexible head for 90° elbow joints (int. dia. 50 mm)  
Sealed up to 3 bar  
Optimum lighting (12 white LEDs)



**30 metres of cable to go anywhere:**  
Semi-rigid fibre glass cable to facilitate pushing and pulling elbow joints. Markings every 10 cm along the cable to locate the camera head. Cable guidance for quick storage and to avoid knots.



**Battery or mains: take your time!**  
2 batteries for independence during operation. Remaining autonomy displayed on screen. Mains adaptor for long operations.



**Large 7" movable screen:**  
Hands-free inspection: screen fixed to the case and can be moved to 90°. Remote inspection: 1.8 m cable to move the screen into hard to reach places. Widescreen format. Time/date indication. Brightness/colour adjustment

**Top of the range digital sensor:**  
CDD technology for perfect image quality. Wide view: 120° angle opening. Adapted focus for close and distant viewing. Good vision in dark locations (Sensitivity 0.5 lux).

**The Visioval 294020 is delivered in a case with:**  
1 50 mm centre guide, 1 elbow guide for large diameters, 1 non-slip mat, 2 batteries, 1 mains adaptor



## > Visioval 294030 *with recorder*

**All the advantages of the Visioval 294020**

- 26 mm waterproof head
- Top of the range digital sensor
- Large 7" movable screen
- 30 metres of cable
- Battery or mains power supply

**With the following extra functions:**

- Built-in recorder
- Video recovery to PC
- Intuitive control panel
- Indication of the distance travelled on the screen



**Built-in independent recorder,** with 2 GB memory card (2 hrs of video). Videos recovered to PC via the USB port.



**On screen indication of the distance travelled** (instead of cable marking)



**Intuitive control panel** to manage all functions: Record / Play / Erase

**The Visioval 294030 is delivered in a case with:**  
1 50 mm centre guide with protective cage  
1 2 GB SD card, 1 USB cable,  
1 non-slip mat, 2 batteries,  
1 mains adaptor



**virax**



## Available accessories:



**Centre guide** for pipe diameters 70 mm (min) to 150 mm (max) (ref. 294021): enables the camera to be centred in larger diameter pipes thanks to its 6 flexible and interchangeable brushes.

**24 spare brushes** (ref. 294022): for creating 4 sets of 6 brushes, by cutting them to the most frequently inspected diameters and changing them on the centre guide 294021



**Extension for centre guide** (ref. 294033): composed of an extension and a 2nd 150 mm centre guide with brushes: enables the head to be stabilised and improve guidance in pipes with diameters of over 100-120 mm; only operates in association with ref. 294021

**Chimney weight** (ref. 294028): Weight (700 gr.) for all vertical inspection applications (e.g. chimneys over 70 mm diameter).



**Set of additional LEDs** (ref. 294029): To enhance lighting (16 LEDs); used for all vertical inspections; operates only in association with ref. 294028.

**Elbow guide** (ref. 294023)\*: enables the camera to get around 90° elbow joints more easily in large diameters.



**Guide ring** (ref. 294024)\*: enables better centring for inspections from diameters of 50 mm to 70 mm.

**Guide ring with protection** (ref. 294031)\*\*: enables the lens to be protected from impact and acts as a centre guide from 50 mm in diameter;



**Quick external charger** (ref 294032): enables a battery to be charged in 1.5 hrs max, while using the Visioval with the other battery.

**USB PC video converter** (ref. 294026): used to record the inspection or save photographs to a laptop PC by connecting it to the camera's video output socket; only recommended for use with the 294020.



\*Accessories supplied as standard with the Visioval camera 294020.

\*\* Accessory delivered as standard with the Visioval camera 294030

## Characteristics and dimensions

CAMERA HEAD	For pipes internal dia.	Built-in record function	Distance indication	Autonomy (by battery)	Kg	Ref
Fixed	40-150 mm	No	On cable	1h30	8	294020
Fixed	40-150 mm	Yes	on screen	45 mn	8.2	294030



39, quai de Marne - BP 197 - 51206 Epernay Cedex - France  
[www.virax.com](http://www.virax.com)

Service client France - Tél. : +33 (0)3 26 59 56 78 - Fax : +33 (0)3 26 59 56 20 - [client.fr@virax.com](mailto:client.fr@virax.com)  
 International Customer Service - Tél.: +33 (0)3 26 59 56 97 - Fax: +33 (0)3 26 59 56 70 - [export@virax.com](mailto:export@virax.com)